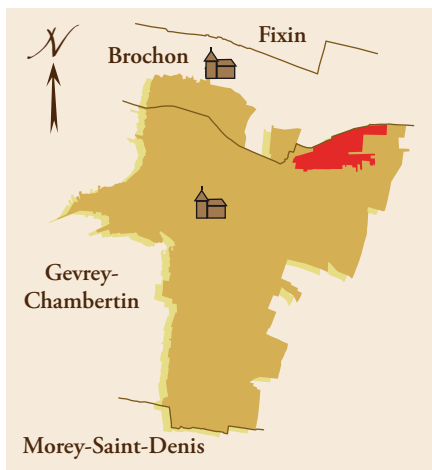


The RENÉ BOUVIER Vineyards



From Vine to Wine...



The Appellation Gevrey-Chambertin

Classification

Gevrey-Chambertin Village

Grape Variety

Pinot Noir

Area of the estate producing Appellation Gevrey-Chambertin La Justice

4.94 acres, i.e. 2 ha

Forty-year-old vines

Traditional vinification lasting 20 days on average

Maturation in barrels, with 30 % new barrels, for 18 months

The wine

This red wine is a deep ruby with subtle hints of purple, shining clear, bright and strong. The elegant nose unfolds with ripe black fruit and floral hints of violet, and a delicate touch of spices crowning the whole. The attack is supple and velvety, with a rich consistency, always lively and alert, and a pleasing viscosity. This elegant wine reflects the fine expression of the Gevrey-Chambertin appellation.

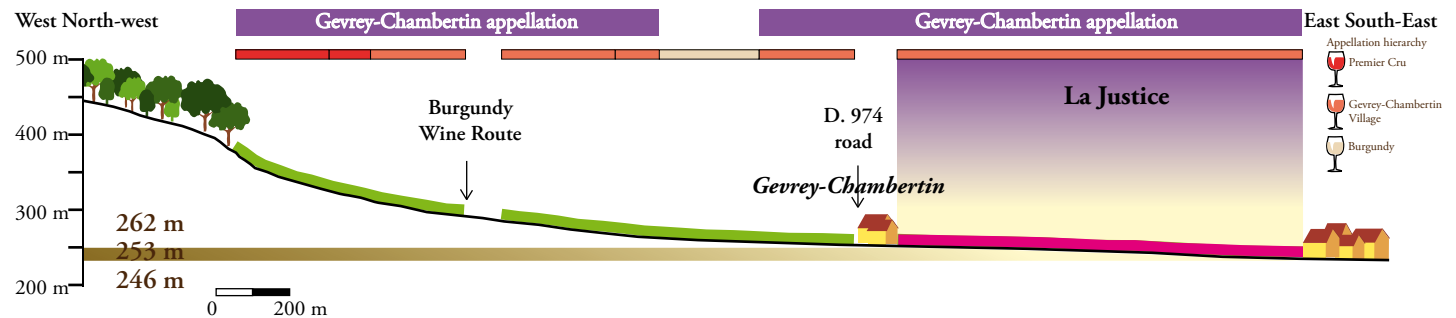
It will go well with roast duck, grilled red meat, sea bream with tomato confit and Espelette pepper, roast black Bigorre pig, or Jabugo ham.

Best served at 17 ° C.

Background

In the Middle Ages, the lord rendered justice on his lands. The place-name recalls the site where criminals were executed. In Old French, «Justice» referred to the gallows, or gibbet, the site of legal executions.

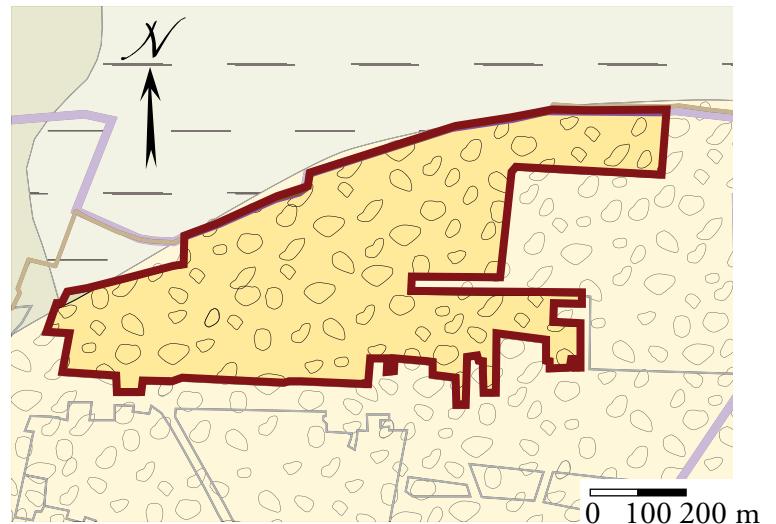
The Landscape



Located east of the D 974 road, La Justice extends north of the village of Gevrey-Chambertin, a vast, almost flat vineyard, ranging in altitude from 807 to 860 feet (246 to 262 metres), with an average of 830 feet (253 metres). The slope is very gentle (1 to 2%), on average 1.5%, with eastern exposure.

Subsoil and Soil

The anomalous situation, for Côte de Nuits, of an Appellation Communale east of the D 974 road is explained by its geology. During the last Ice Age, twenty thousand years ago, the excavation of valleys by raging summer torrents generated alluvial deposits, ranging in size from fine clay loam to blocks weighing several tons, at the outlet of these dry valleys (*combes*). The huge size of Combe Lavaut explains the volume of the alluvial fan deposits. These alluvial fan deposits of shale and gravel cover the marls and generate an excellent soil for growing vines, with good drainage.



English version supervised
by Carmela Chateau-Smith

Mars 2009

Domaine RENÉ BOUVIER
GEVREY-CHAMBERTIN

E-mail: rene-bouvier@wanadoo.fr



françoise vannier-petit

géologue - 33 (0)3 80 42 96 99